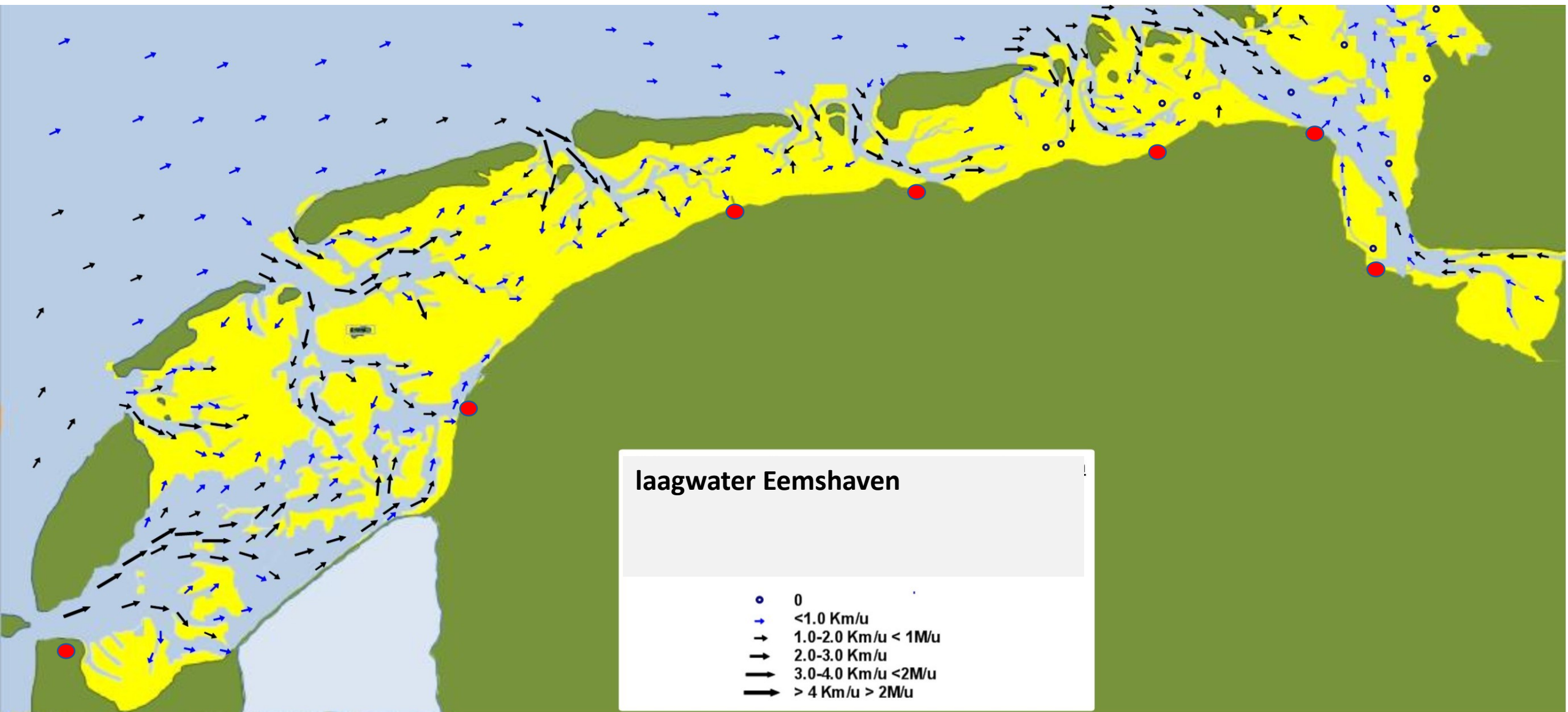
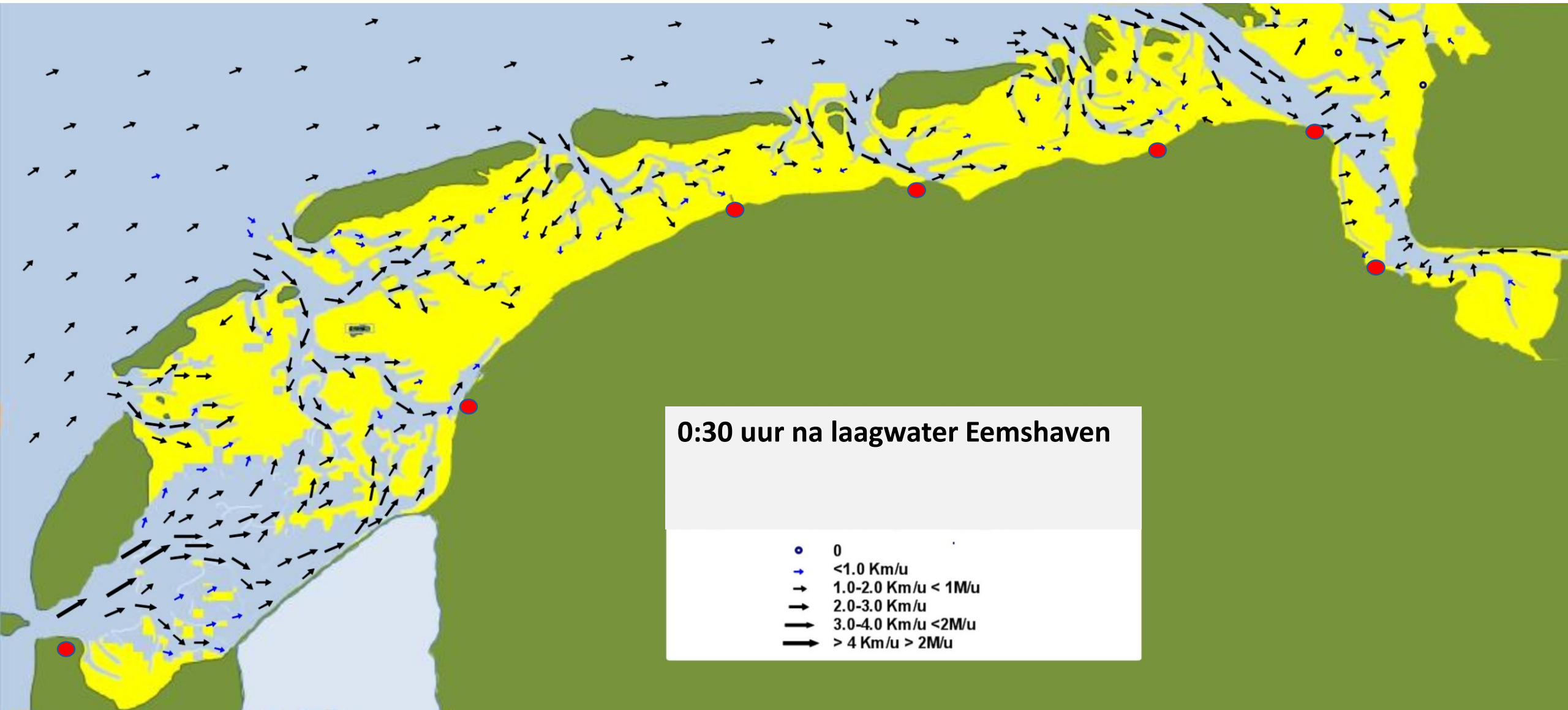
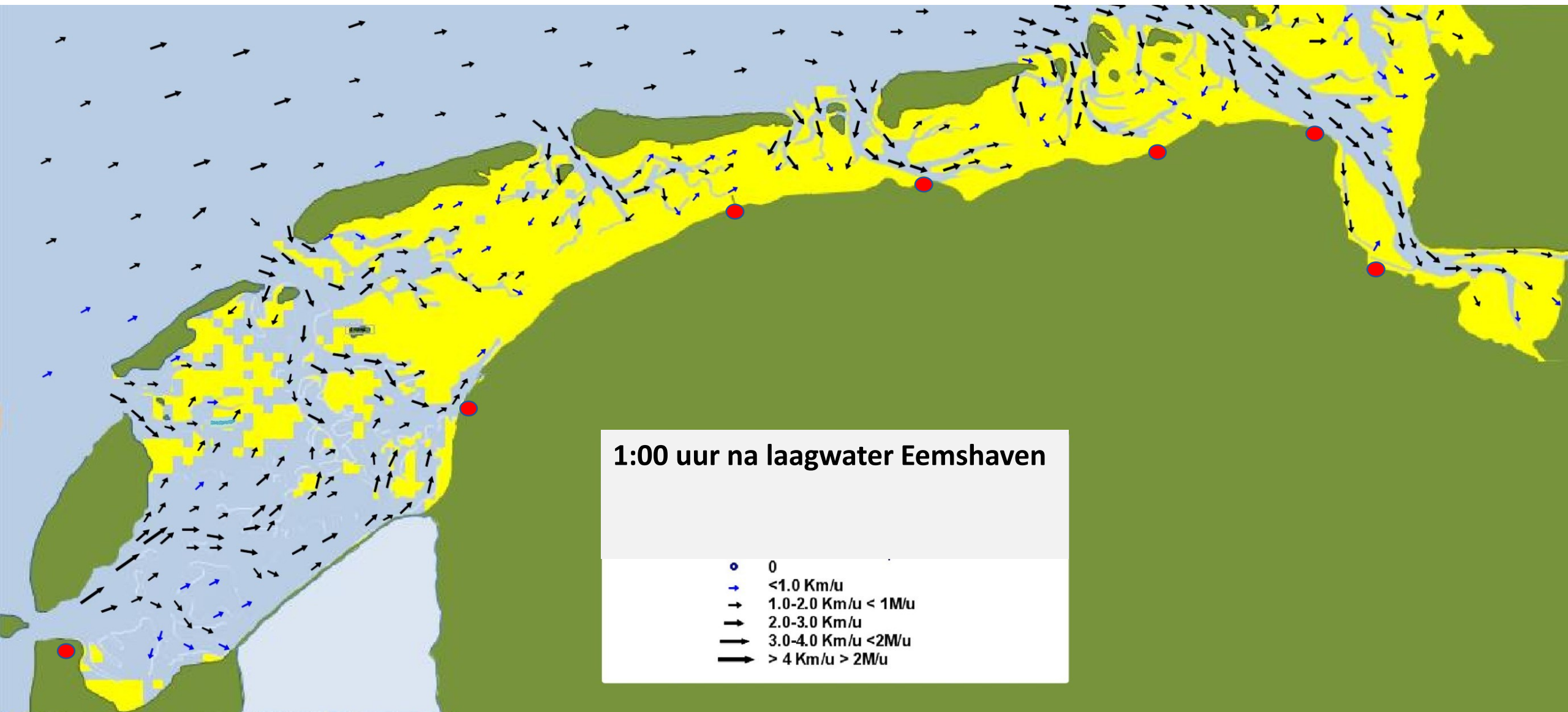




stroming en droogvallen
in stappen van 30 minuten
laagwater <-> laagwater
Eemshaven

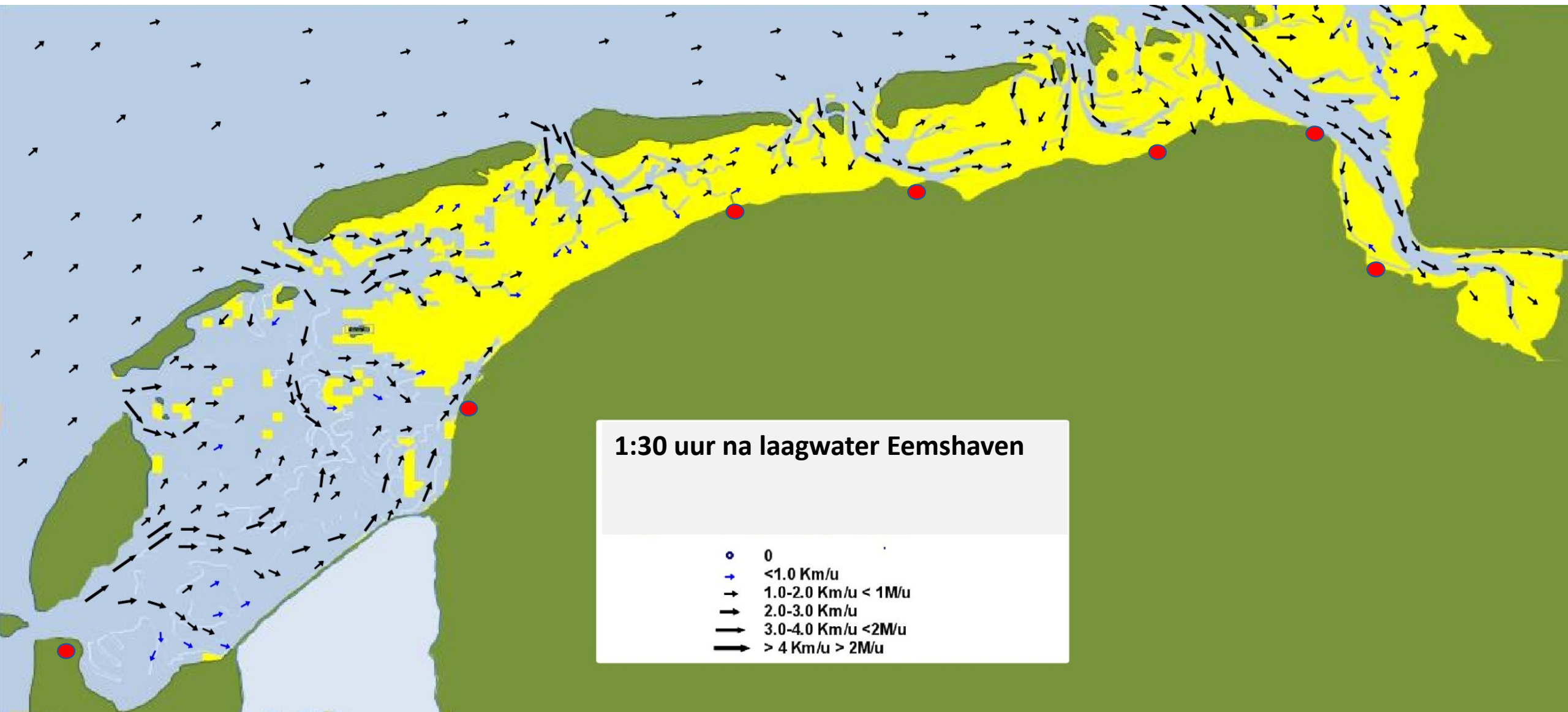


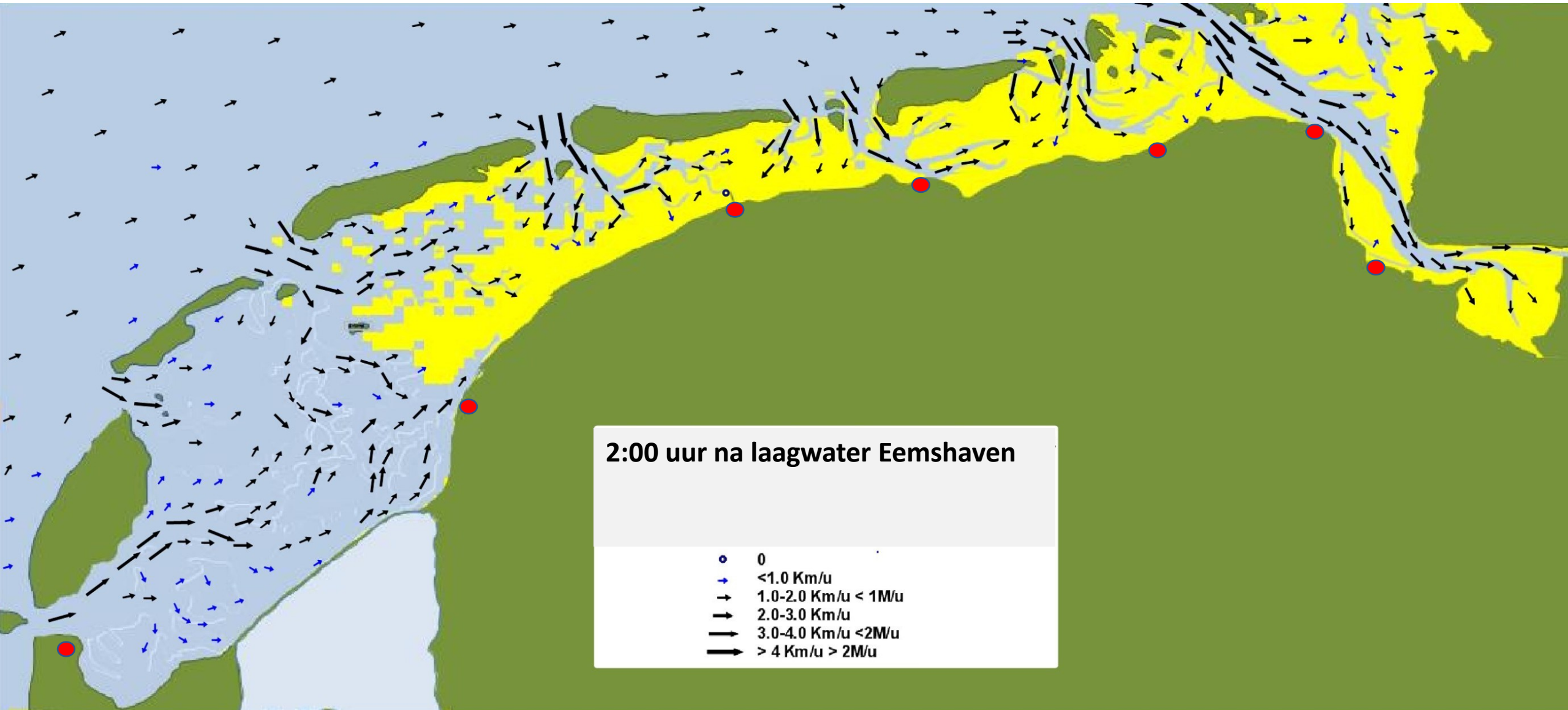




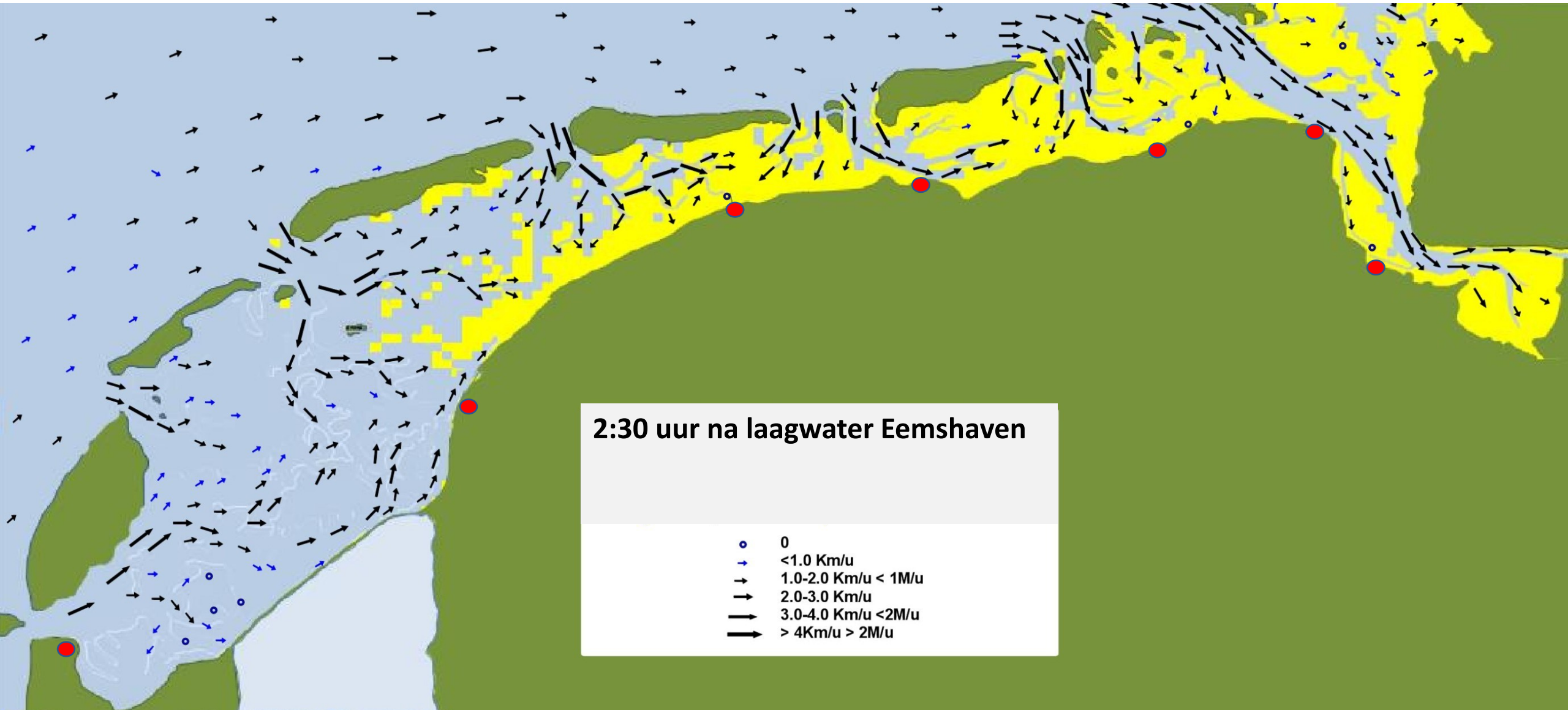
1:00 uur na laagwater Eemshaven

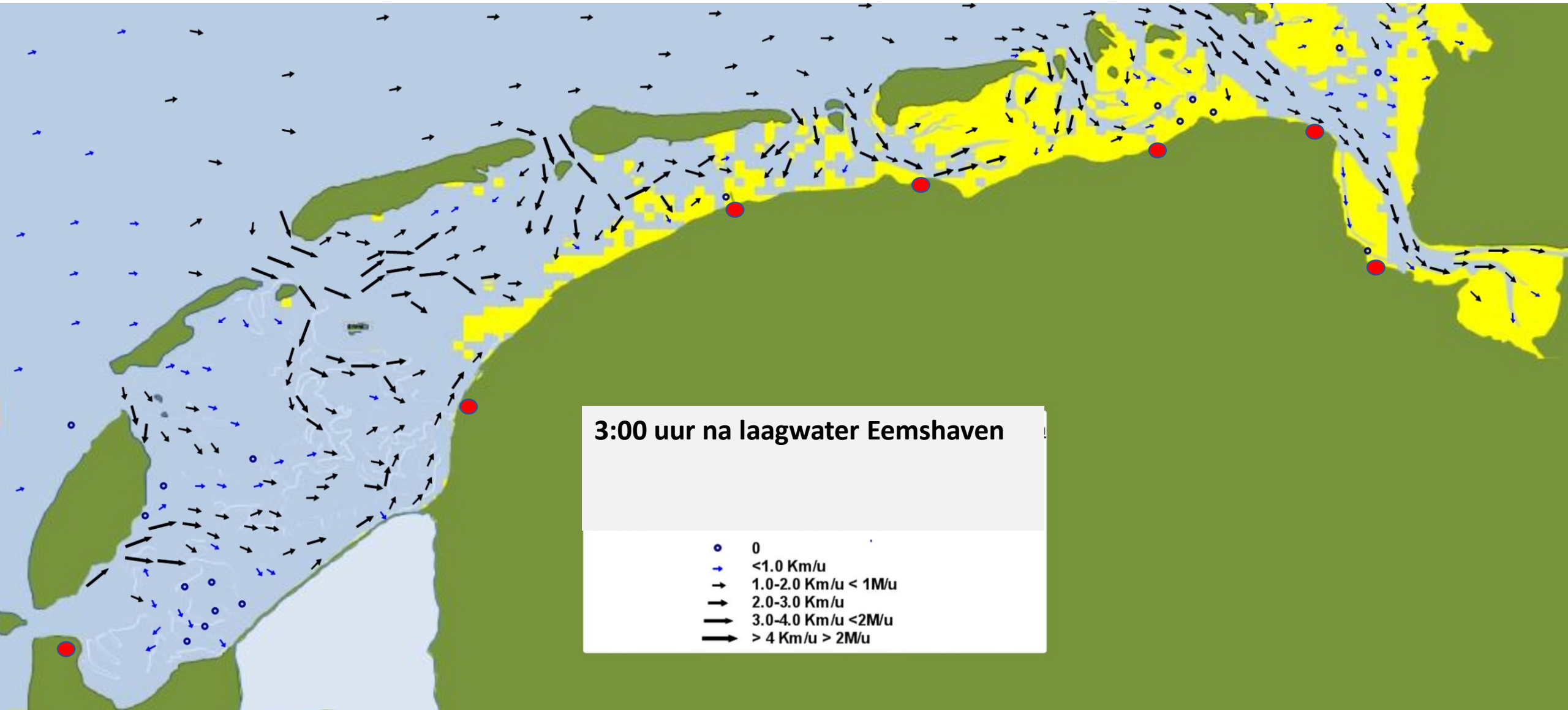
○	0
→	<1.0 Km/u
→	1.0-2.0 Km/u < 1M/u
→	2.0-3.0 Km/u
→	3.0-4.0 Km/u <2M/u
→	> 4 Km/u > 2M/u

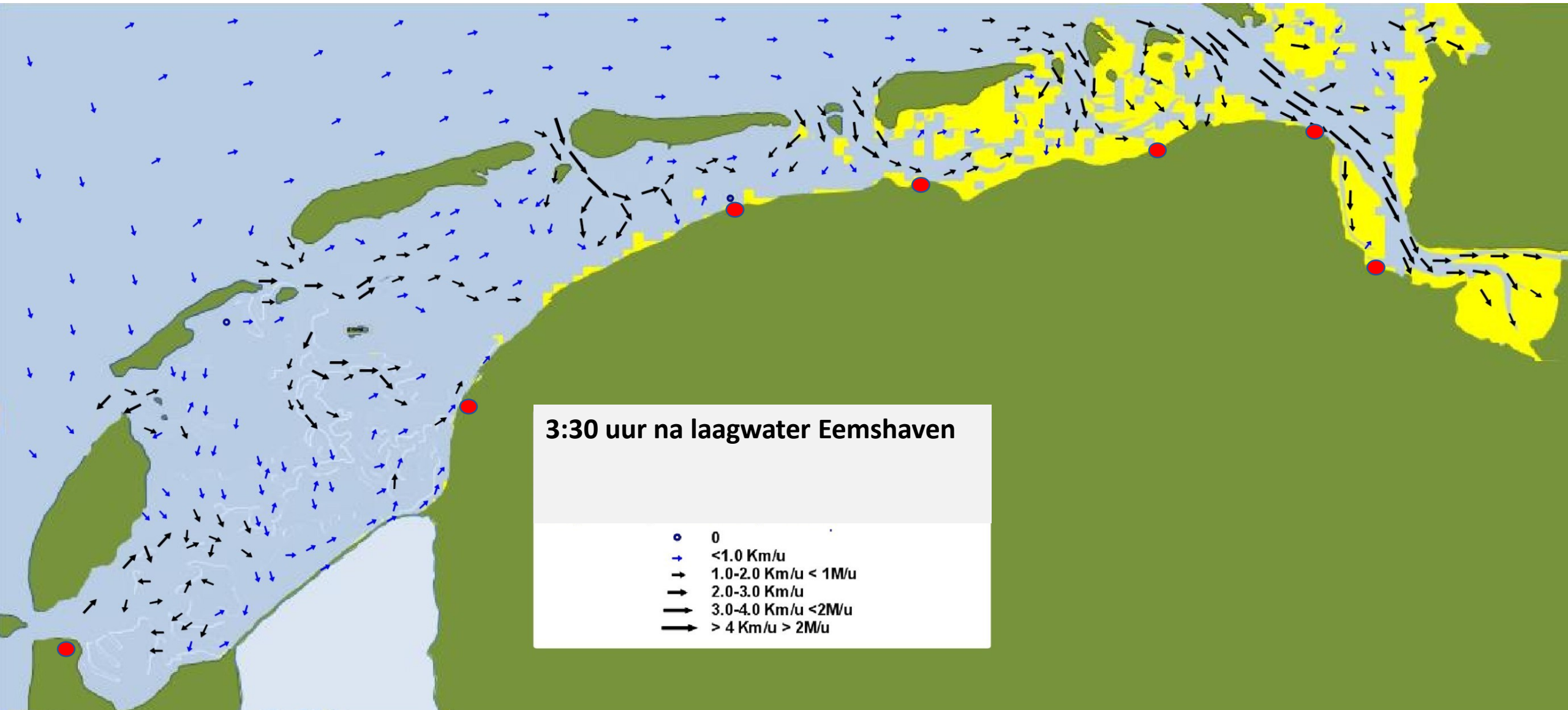


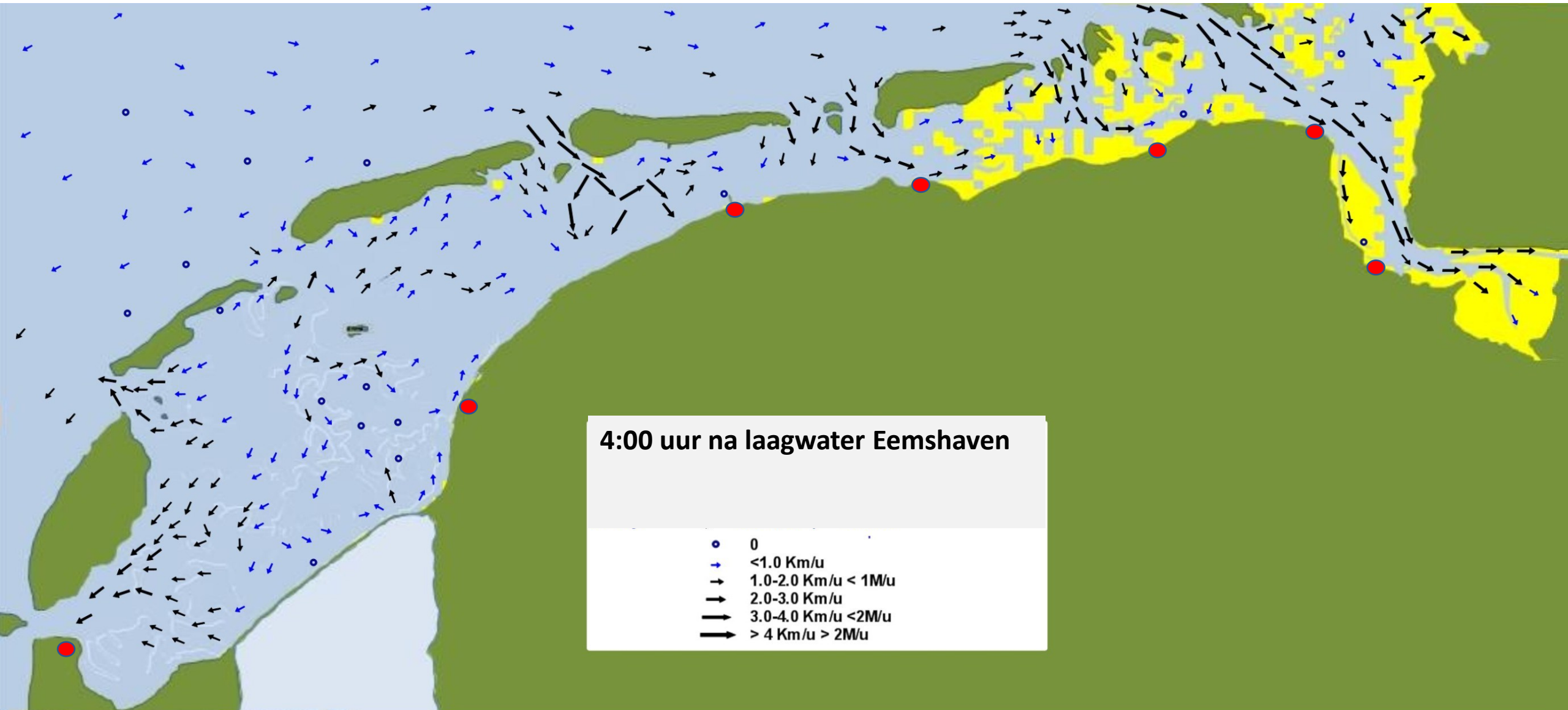


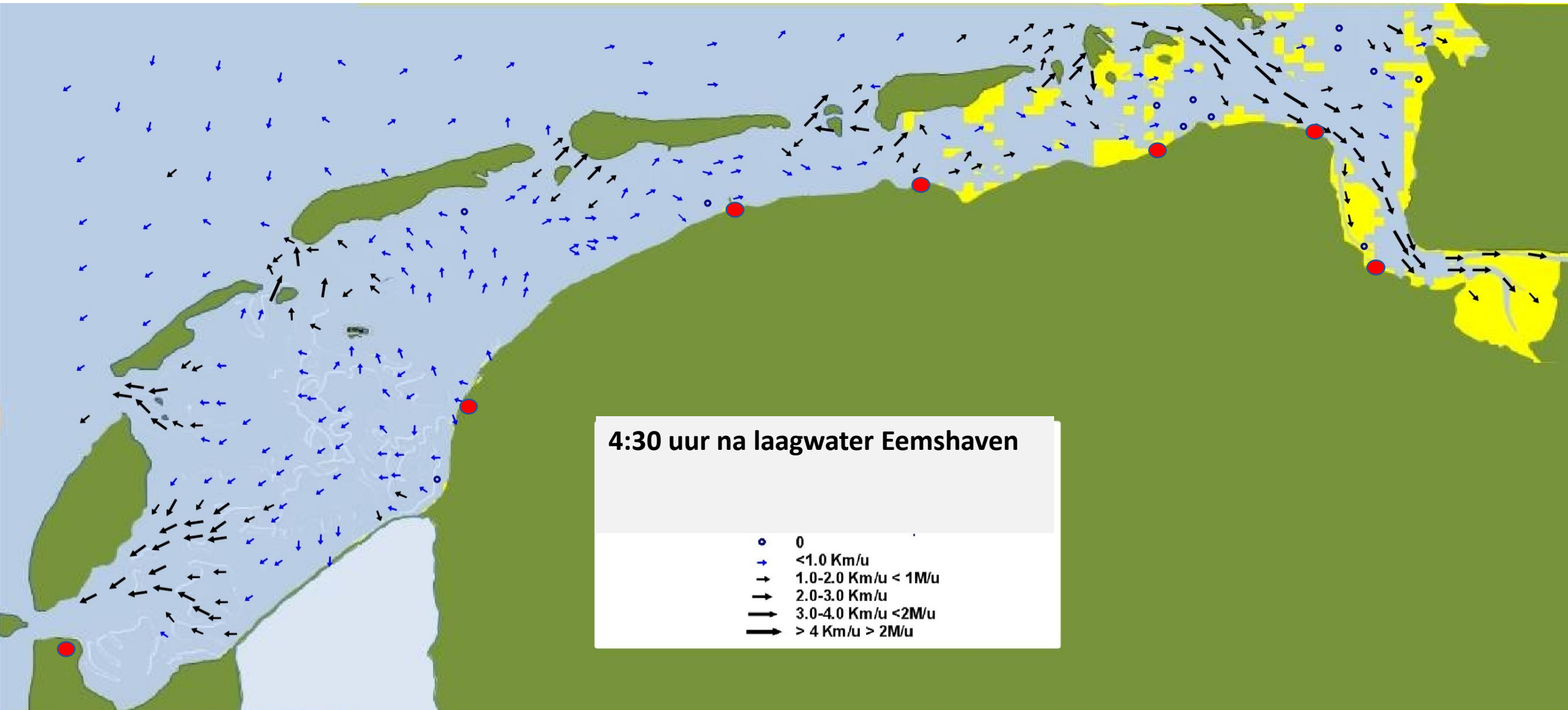
2:00 uur na laagwater Eemshaven

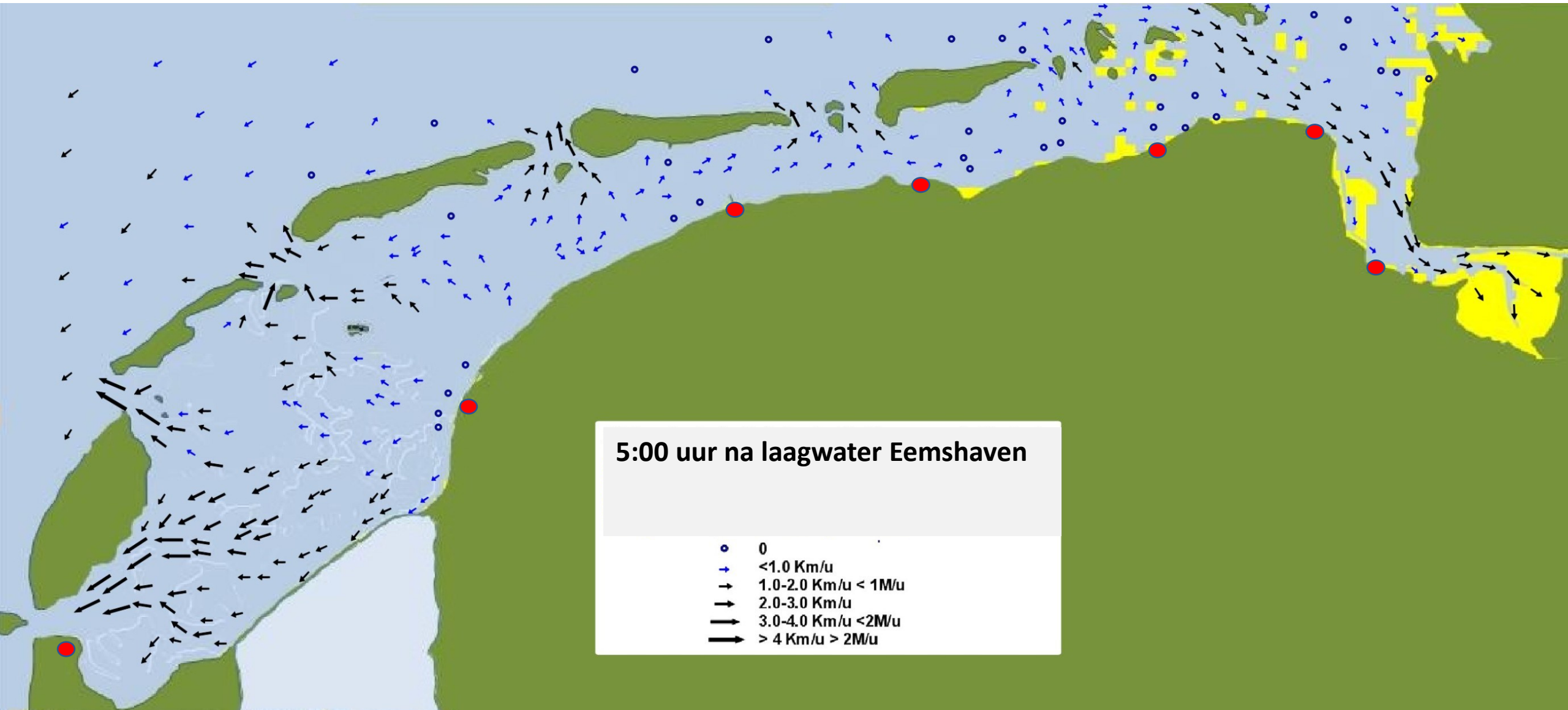


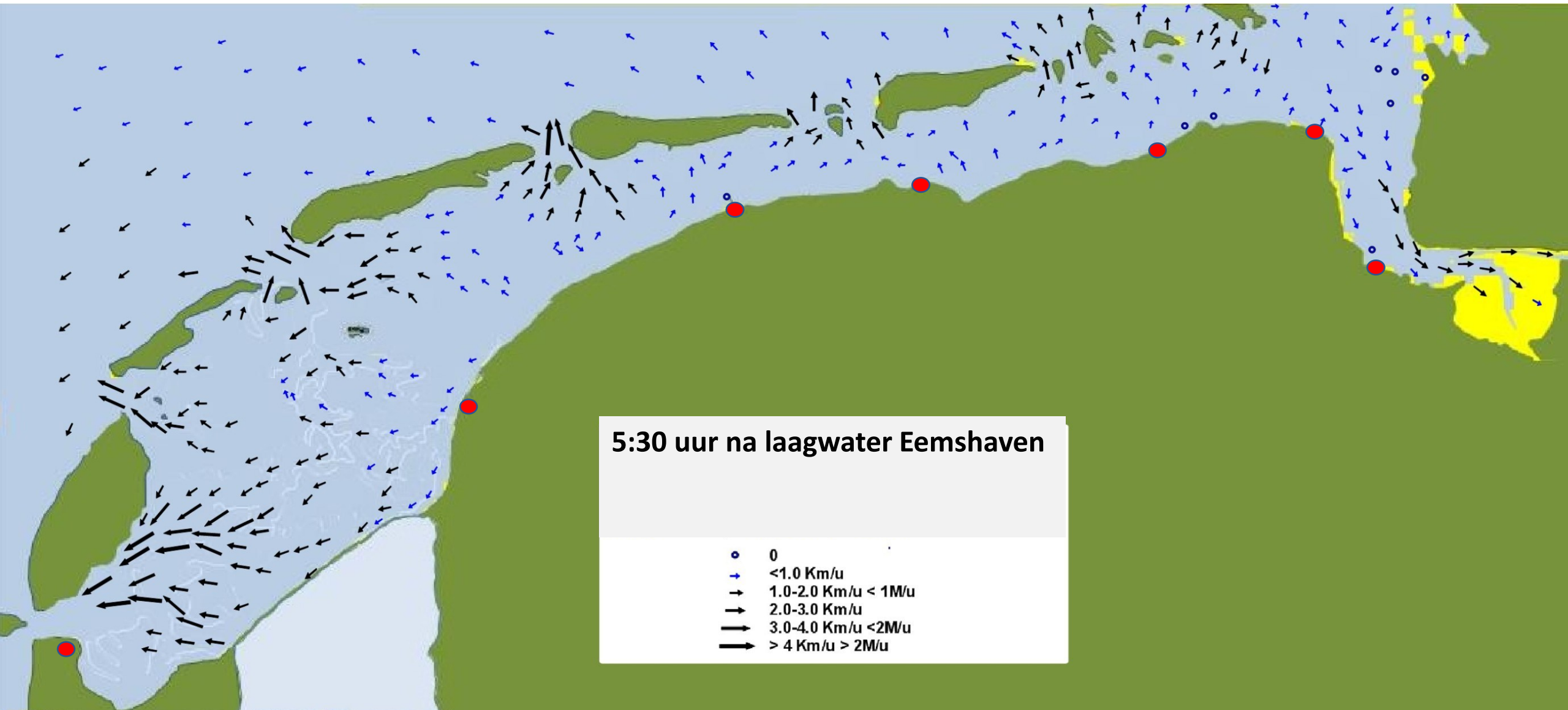


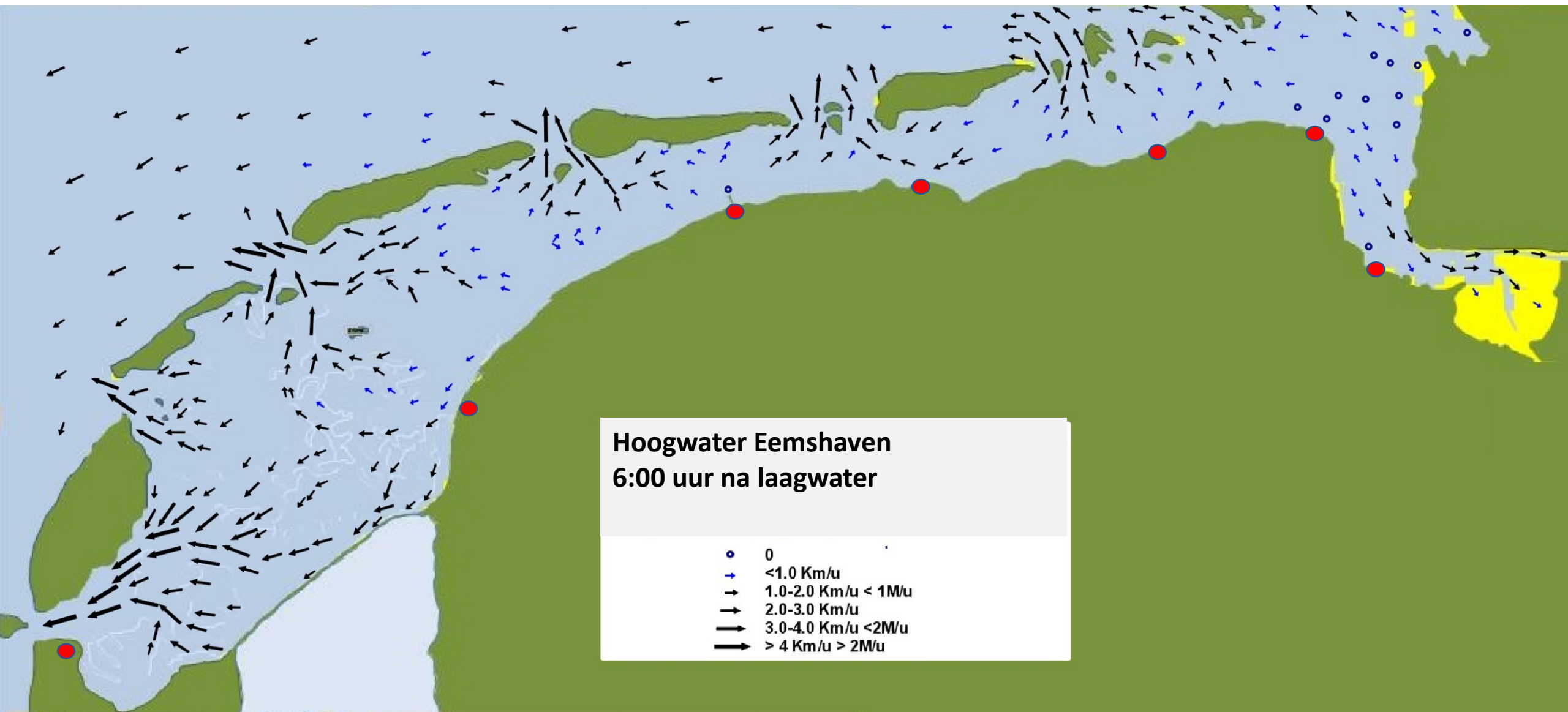






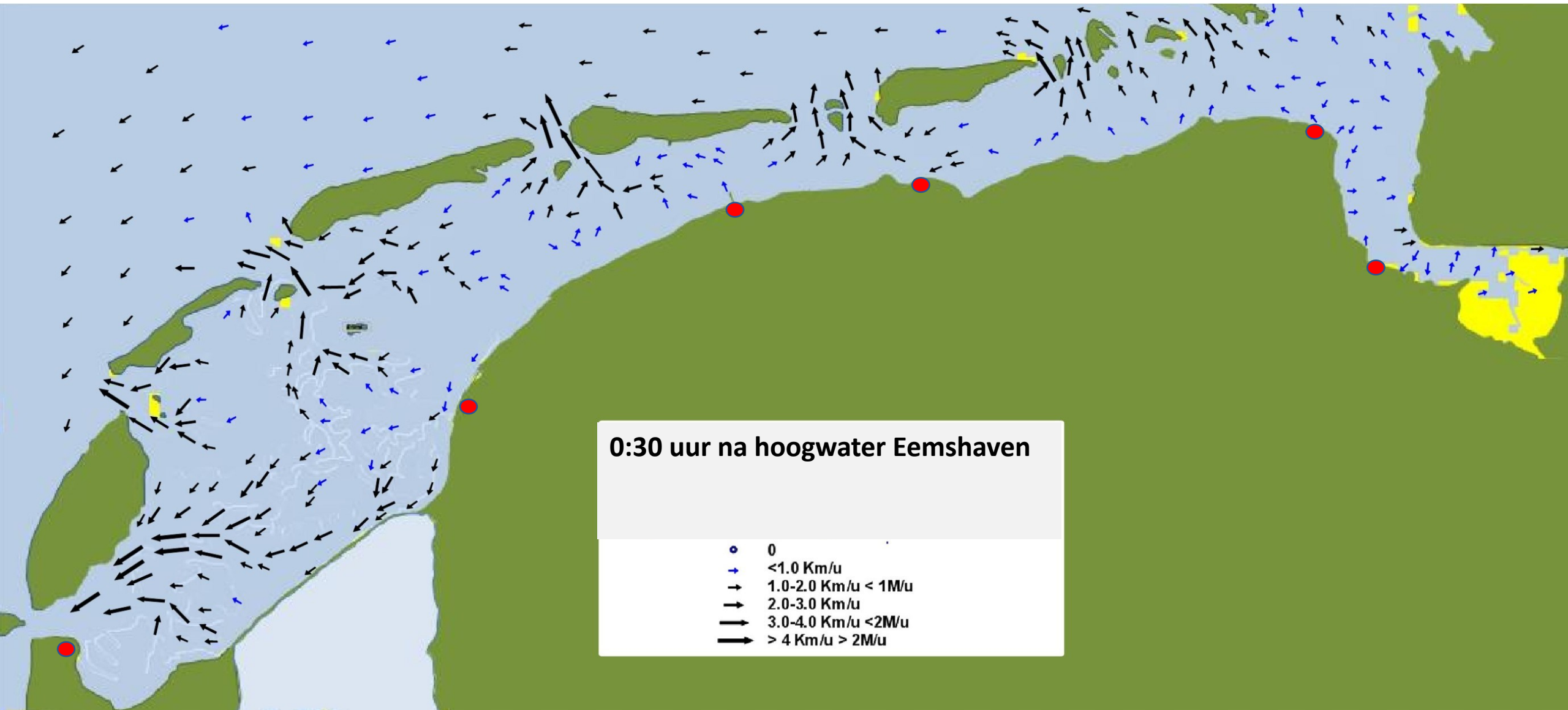


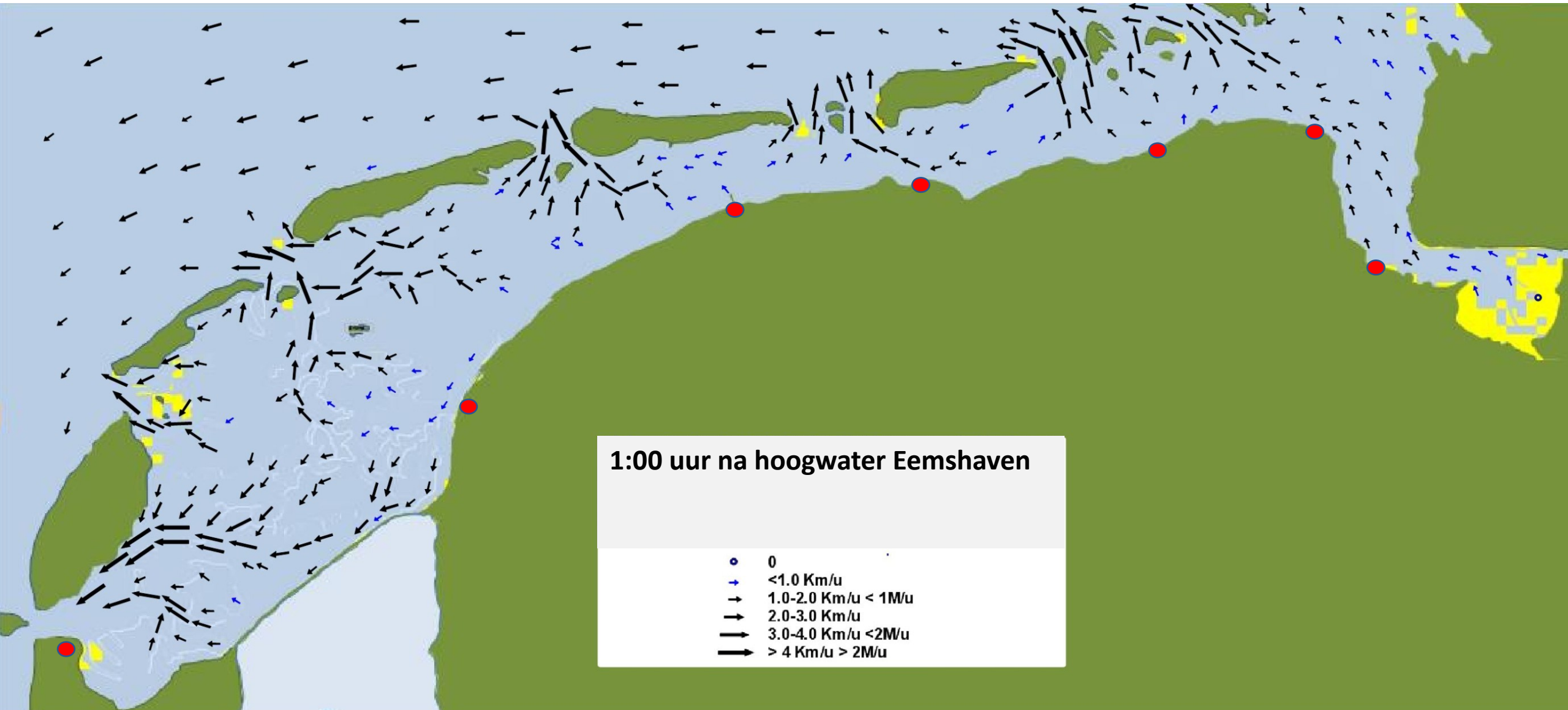


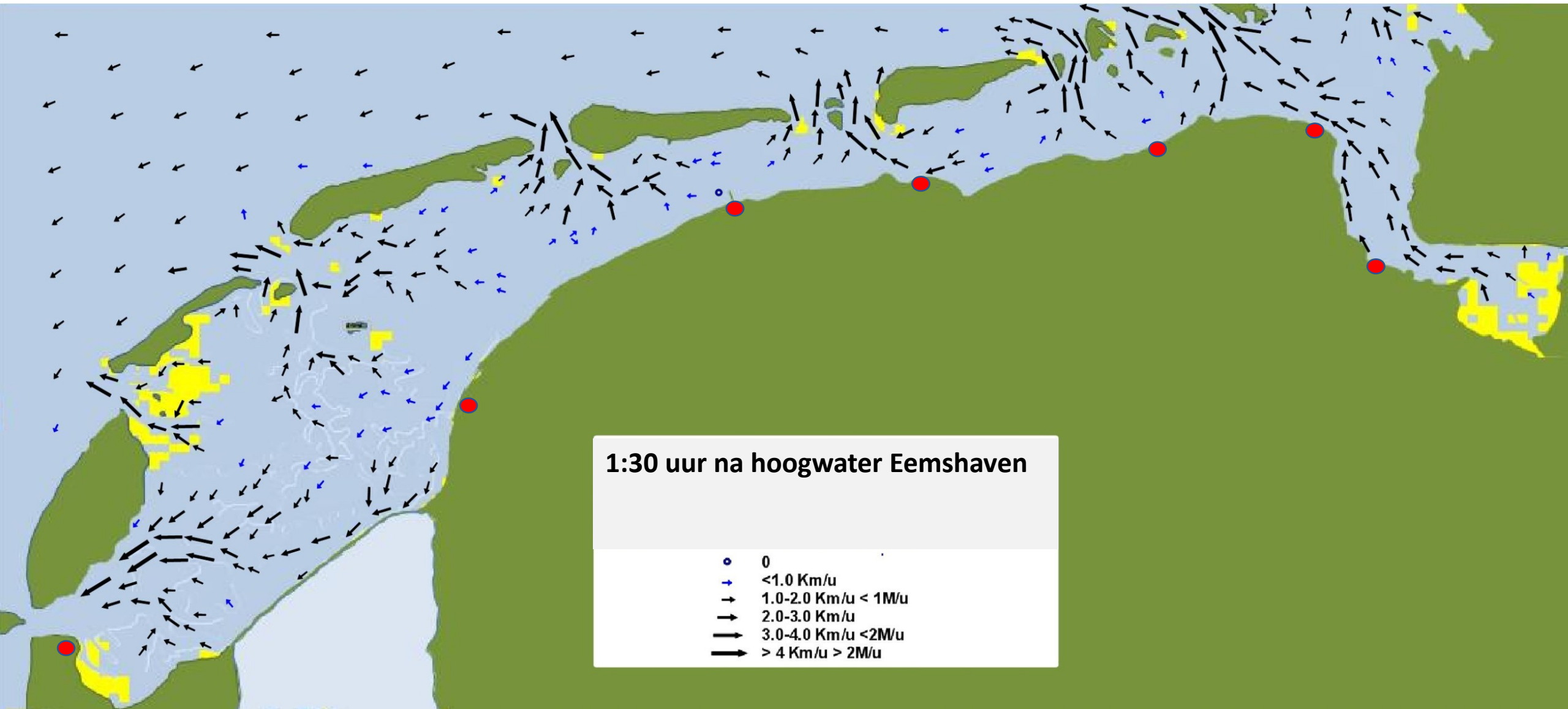


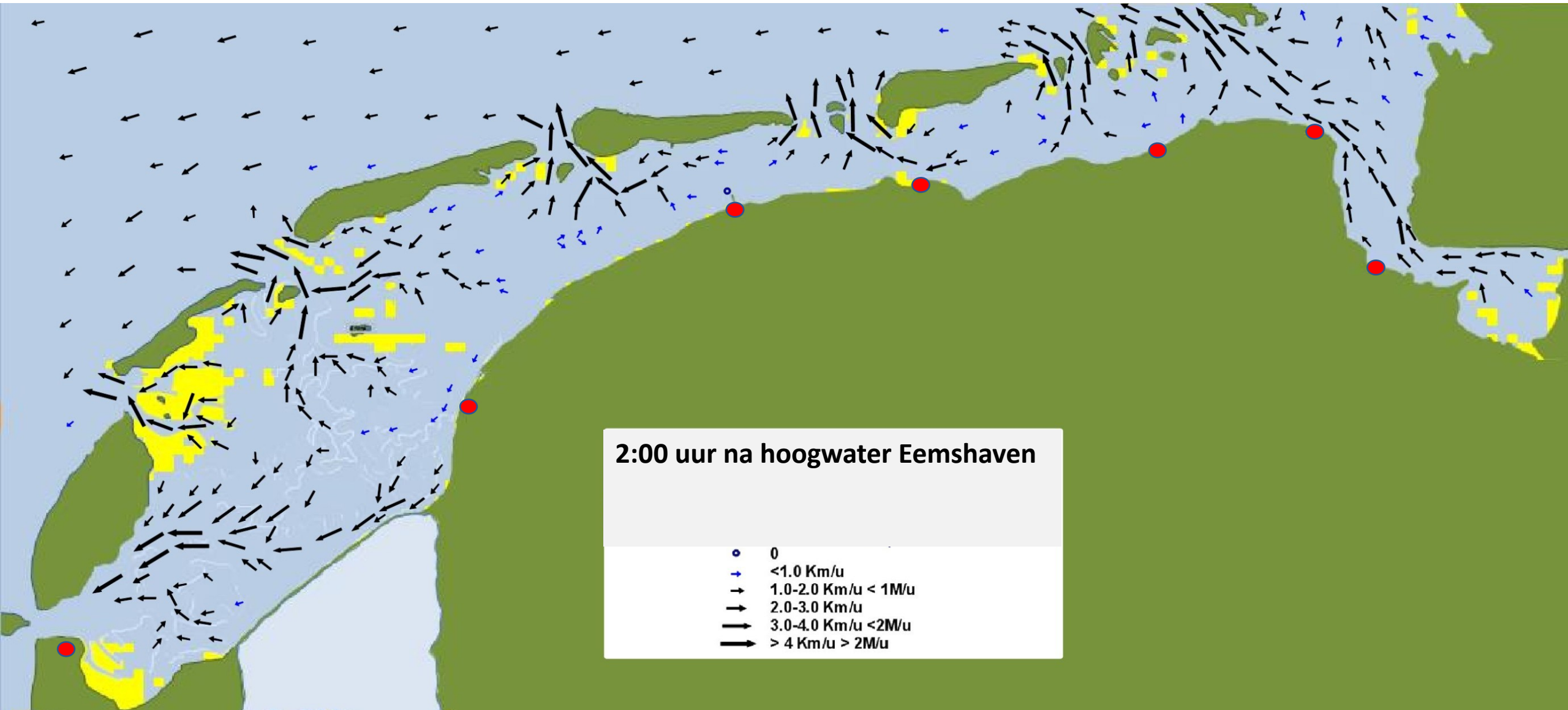
Hoogwater Eemshaven 6:00 uur na laagwater

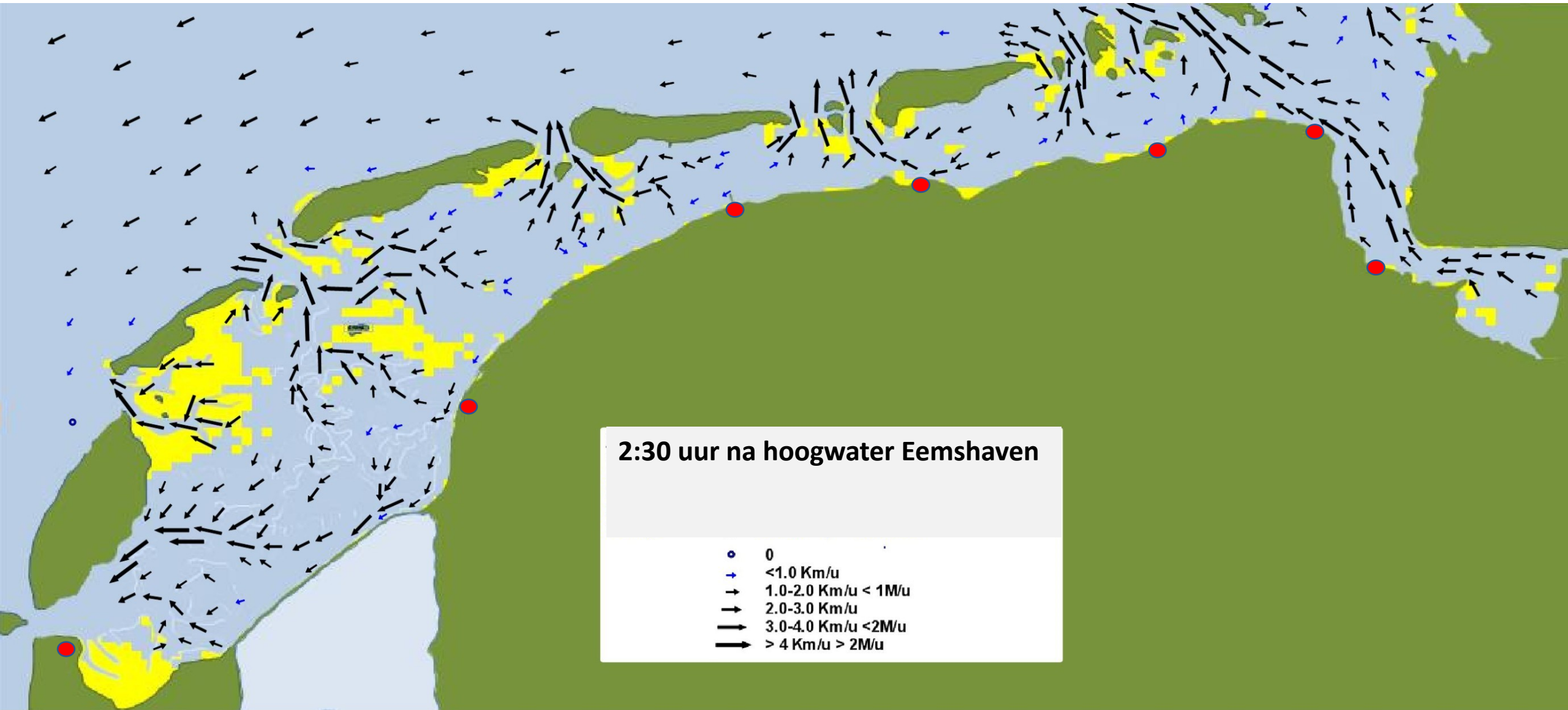
- 0
- ↓ <1.0 Km/u
- ↓ 1.0-2.0 Km/u < 1M/u
- ↓ 2.0-3.0 Km/u
- ↓ 3.0-4.0 Km/u < 2M/u
- ↓ > 4 Km/u > 2M/u

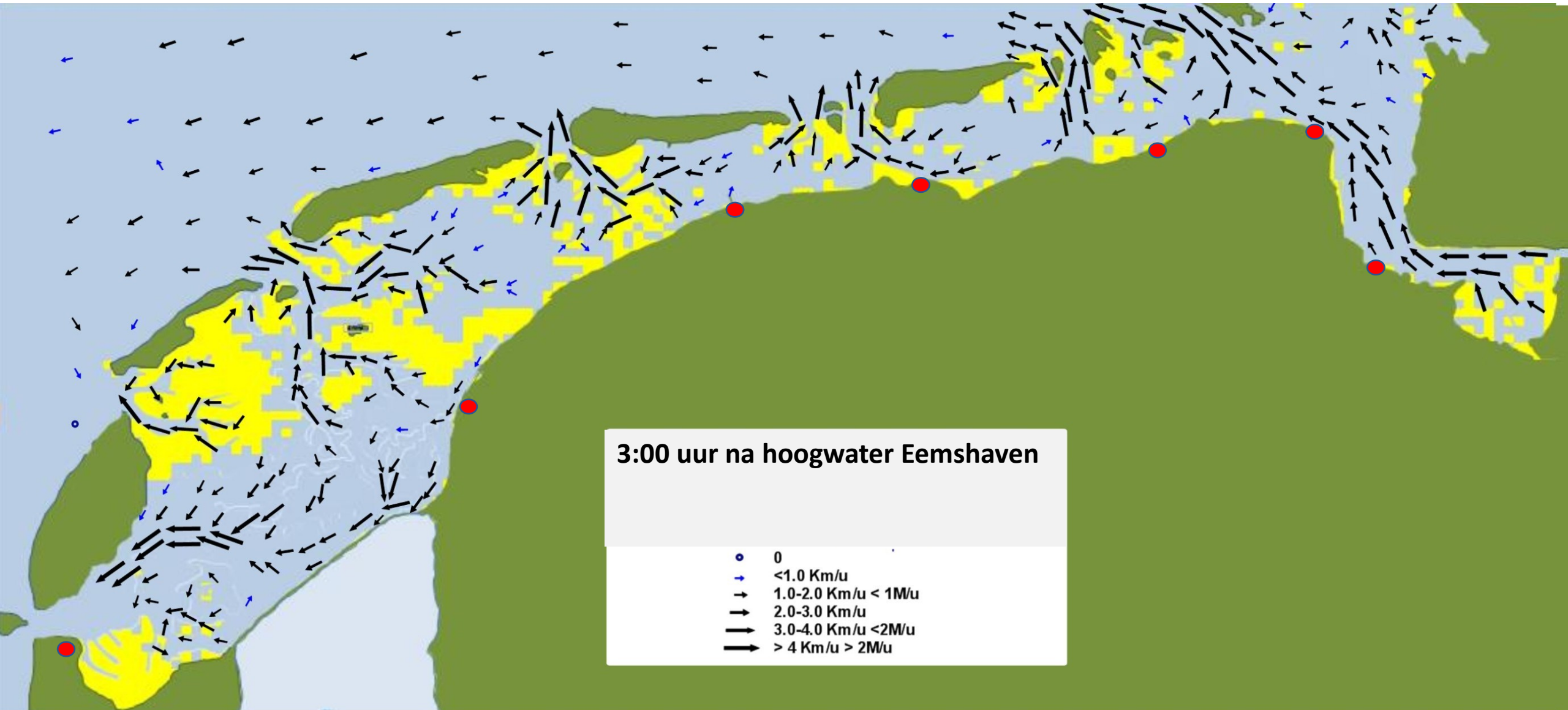


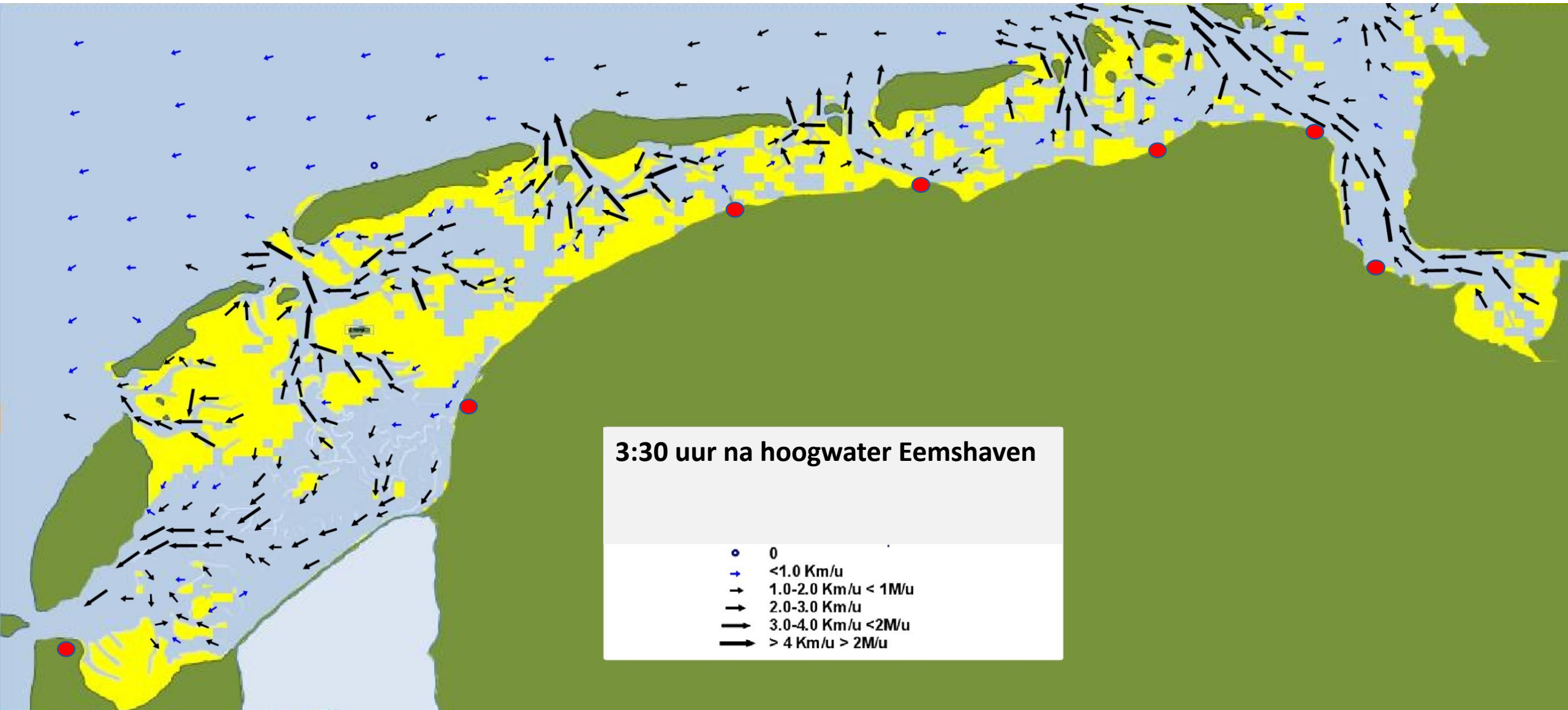


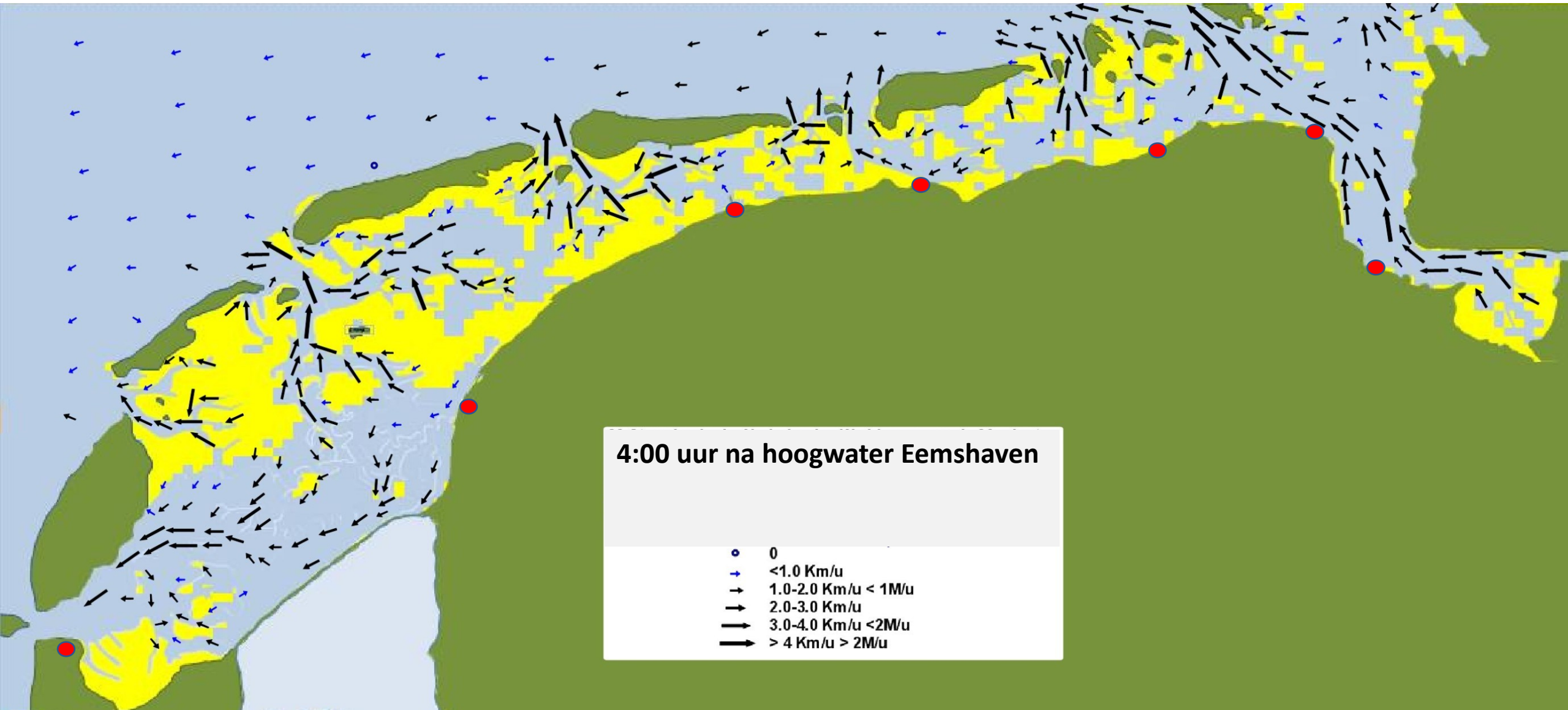


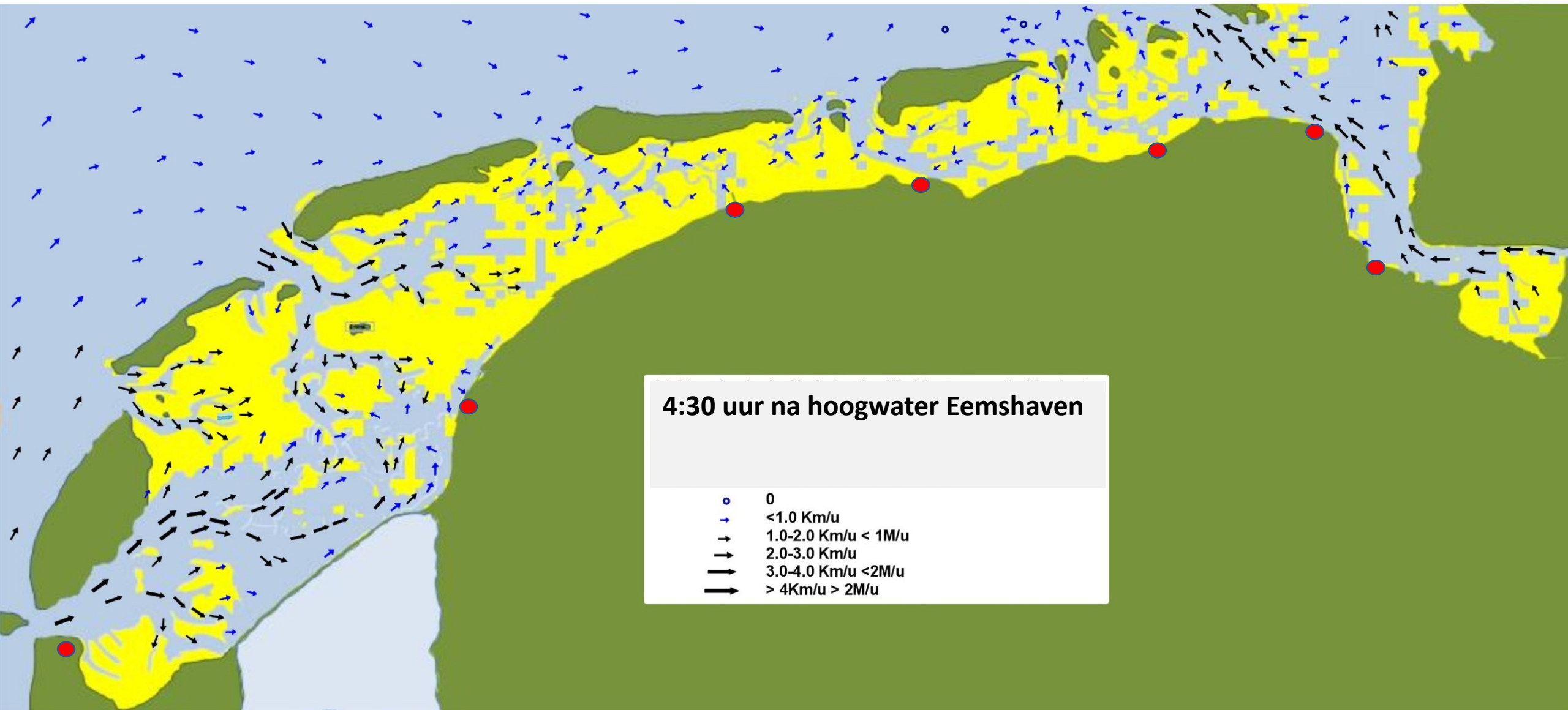












4:30 uur na hoogwater Eemshaven

- 0
- <1.0 Km/u
- 1.0-2.0 Km/u < 1M/u
- 2.0-3.0 Km/u
- 3.0-4.0 Km/u <2M/u
- > 4Km/u > 2M/u

